



Information Lifecycle Management for SAP Combining SAP ILM and Effective Storage

By Kristin Gerling

Regulatory rules and business information requirements are the driving factors for an enterprise's Information Lifecycle Management (ILM). SAP ILM offers the rules framework to satisfy these requirements, while SAP certified archiving solutions and the right storage sublayers provide data security and management for the needed retention periods. SolutionXchg supports you with the necessary products and desired consulting expertise to guide you through your ILM implementation project and helps you make the right decisions along the way.

Effectively manage long-term Document and Data Retention embedded in a complete Lifecycle Strategy and based on a compliant Storage Approach

Supporting all Enterprise ILM Requirements

The management and retention of information has become so important that traditional data management approaches are no longer sufficient. SAP's ILM is the solution for SAP customers who have been data archiving and imaging for years and are now faced with the task destroying the records that have reached their retention time. In addition ILM offers a

- ▶ **Complete Retention Management**
- ▶ **Legal Holds**
- ▶ **Regional Retention Settings**
- ▶ **Automatic Deletes**

solution for system decommissioning.

Many mergers and acquisitions leave a vast number of SAP systems that need to be kept up and running without generating new transactional data, but with SAP ILM, SAP customers can discontinue the upkeep of such systems and save on unnecessary expenses.

Information Lifecycle Management is not a one-time exercise but an ongoing process to maximize the use of information in your organization while reducing unwanted legal exposure and extraction costs caused by data that is legally expired and where retention is no longer necessary.

According to SAP Data Archiving and ILM Product Manager, Georg Fischer, who is the leading ILM expert, SAP ILM rests on the following three pillars:

- **Data Archiving and Management** – This feature is a combination of traditional, standard tools and processes used by most large SAP customers to manage database volume. Included here are standard archiving objects and programs, analysis tools, and indexing functions for accessing archived data.
- **Retention Management** – This utility comprises a range of new functions such as the Information Retention Manager (IRM), a central tool for managing all your retention policies, and the Legal Case Management (LCM), a tool for

legal hold and automated e-discovery support. IRM policies are based on external legal requirements or

“The combination of SAP ILM functionality and Compliant Archiving Storage (CAS) finally offers a business complete solution for SAP centric data and document retention management.”

Reiner Kraus
KGS Software GmbH&Co.KG

internal service level agreements. These policies can also be applied to structured and unstructured data. A new archive and storage interface called BC-ILM 2.0 connects ILM to ILM aware storage and is capable of understanding and acting on these policies.

• **Legacy Decommissioning** –

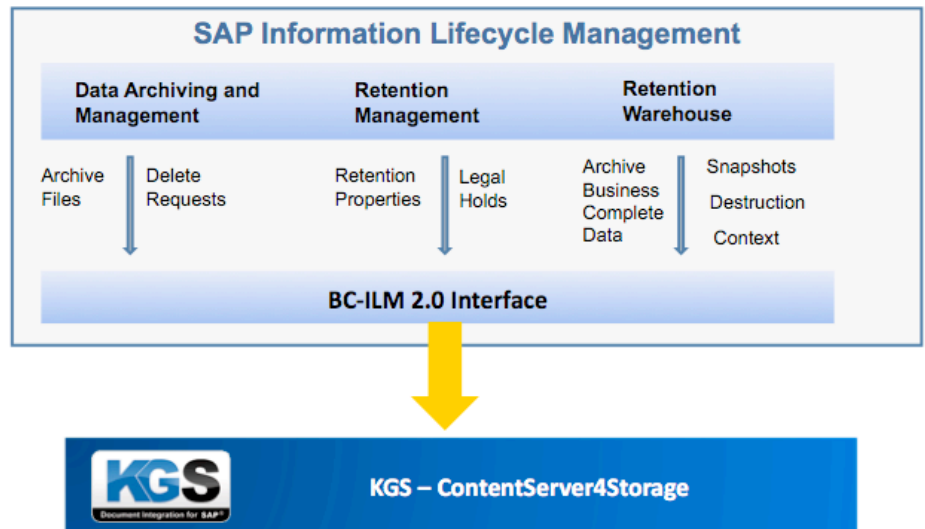
This is a standardized solution and method for decommissioning legacy systems providing tax and other types of reporting on the decommissioned system data. It combines the archiving of business complete data, taking snapshots of business incomplete data, and the destruction of archived data.

The Need for a Different Kind of Storage

All the ILM key features rely on storing data in a compliant storage location but they require additional capabilities in regards to managing the retention of these records. Therefore ILM communicates with the storage layer using the BC-ILM 2.0 interface instead of ArchiveLink.

Through this interface SAP, passes the specific retention settings per stored file on to the archive allowing the archive system then to control the time when a physical delete of a file is permitted. An example is if a legal hold is placed on a certain object, that object is protected from destruction until the legal hold is lifted. This is also true for data from decommissioned systems.

The KGS ContentServer4Storage was among the first SAP archive systems to be certified for BC-ILM 2.0. It can accept and interpret ILM properties (such as the expiration date or destruction command) that it receives on the stored



data in its hierarchy from the SAP system allowing it to then enforce those properties.

Its function is complemented by software or hardware CAS functionality which turns regular magnetic disk storage into compliant archiving solutions.

KGS ContentServer4Storage intelligently bridges the gap between SAP business logic (and its retention requirements that are conveyed by SAP ILM) and the physically stored data objects in the secured storage location that are protected against tampering but released for deletion when required and triggered by SAP ILM data deletion functionality.

The combination of SAP ILM, KGS ContentServer4Storage, and a CAS

storage device constitutes a complete ILM solution.

KGS Software Products SolutionXchg offers KGS ContentServer4Storage

The KGS ContentServer4Storage is an extremely light-weight SAP Archive-Link™ an SAP ILM compatible content storage server. Its ongoing administration requirements are minimal as the product functions without a database. It supports common WORM-like back-end storage solutions by EMC, NetApp, IBM, HP and others, and has SAP-certified integration with the SAP NetWeaver® Information Lifecycle Management (ILM) component.



Contact us:
SolutionXchg
West Chester, PA 19382
info@solutionxchg.com
Tel.: (484) 881-3120

Impressum KGS, SolutionXchg and SAP Trademark and Copyright Notices

KGS ContentServer4Storage™, KGS MigrationServer™, and KGS Migration4Storage™ are software products by KGS-Software GmbH & Co. KG, a Software Company headquartered in Melsbach, Germany. For more information, visit www.kgs-software.com.

SolutionXchg is a system integrator with a long-standing history on imaging and archiving solutions, operating within the US and Canada, and providing

installation and integration services for high class storage and archiving products. For more information, visit www.solutionxchg.com.

SAP® and SAP ArchiveLink™ are trademarks of SAP AG Germany and in several other countries. For more information, visit www.sap.com.

Copyright © 2010 by Solution Exchange, LLC, all rights reserved. Copying or reproducing this document in parts or as a whole is strictly prohibited.

This information brief is built on a 2008 article by Georg Fischer and Tanja Kaufmann, SAP AG published in the J/A/S 2008 issue of SAP Insider, WIS www.WISpubs.com ■